

STREAMLINE

X-Ray imaging tables from Surgical Tables Inc.

DESIGN

This table line is designed for high patient throughput for surgery centers, pain management, and other multidisciplinary medical facilities.

VALUE

The Streamline series is the lowest priced table in the imaging table industry. This line along with the best selling Max series and EconoMax series tables, makes STI the company with the most table options to choose from in the medical table business.

MEDICAL SPECIALTIES SUPPORTED:

- Pain Management
- Minimally Invasive Spine Surgery
- GI Procedures
- Ultrasound Procedures
- Orthopedic
- Endovascular
- Gall Bladder
- X-Ray Procedures

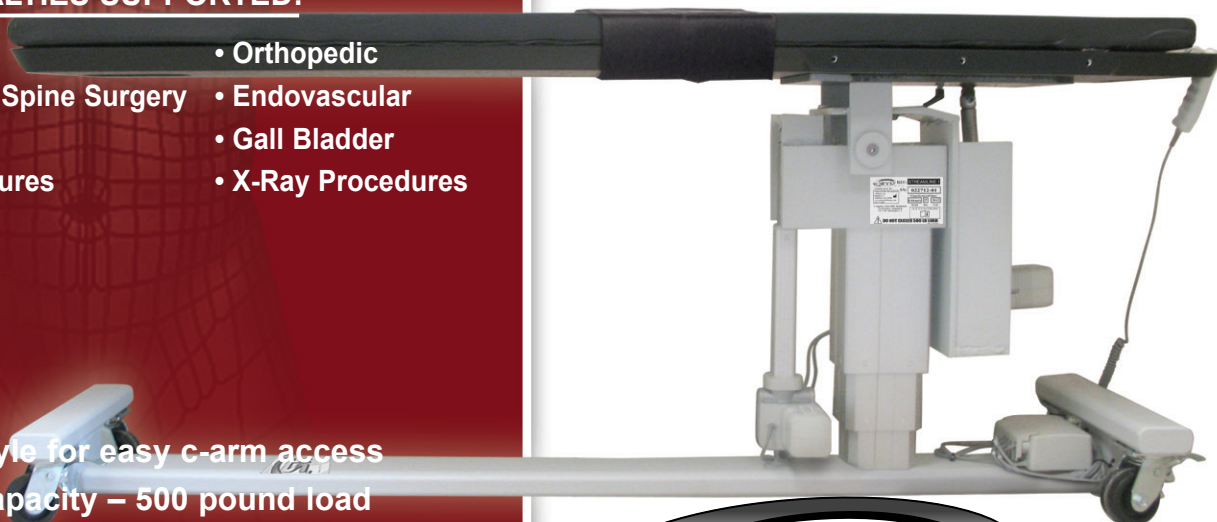
FEATURES

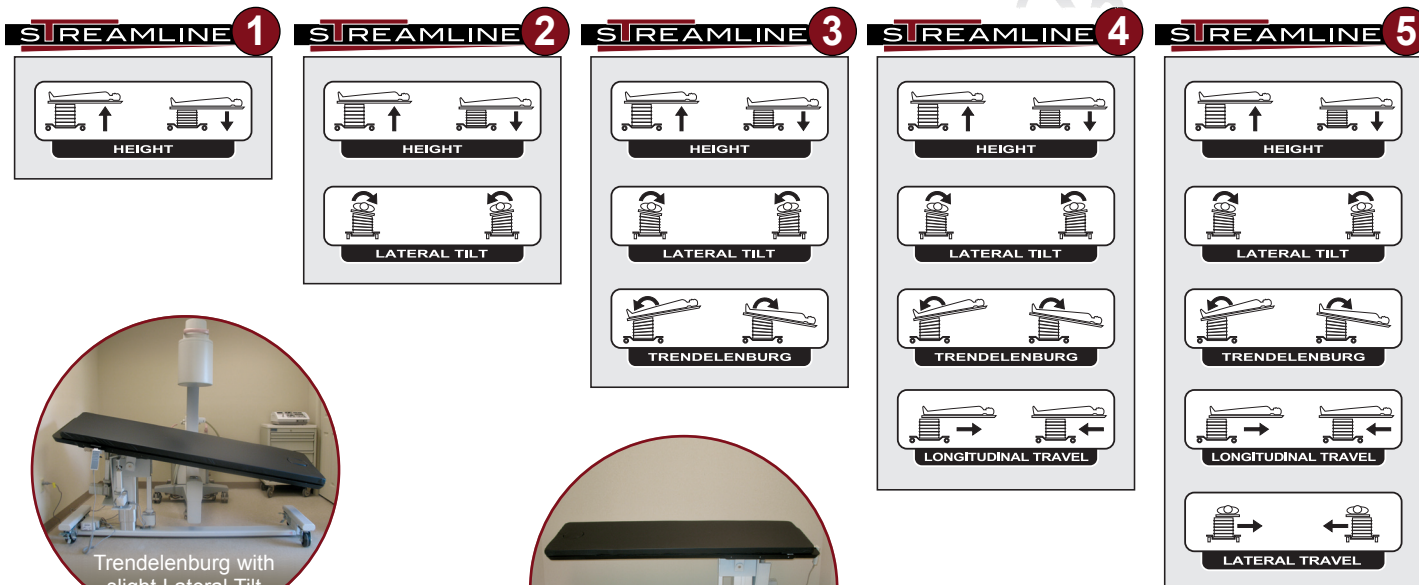
- Diving board style for easy c-arm access
- Large patient capacity – 500 pound load
- 2" patient high quality comfort pad
- Facial Cut-out for prone procedures
- Light weight - easy to physically move the table
- 24" top eliminates need for arm boards
- Simple to use top quality wheel locks
- Easy patient transfer to table



Carbon fiber diving board style imaging table

"absolutely the best price and value in the table industry"





Carbon fiber top of 24" width eliminates need for armboards and 84" length can accommodate even the tallest patients

Easy to use handswitch with power on indicator

High end actuator motor can lift over 500 pound load

Patient Straps

2" thick high quality patient comfort pad

Diving board style easy c-arm access

Lightweight which makes it easy for staff to move the table around the room or room to room



OPTIONS ▼

MODULAR SIDERAIL SYSTEM



PAPER TOWEL ROLL



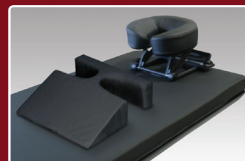
SURGICAL ARMBOARDS
(Removeable & rotates 180 degrees)



PROCEDURAL ARMBOARDS
(Each armboard rotates 180 degrees)



CERVICAL IMAGING PLATFORM



FOOT CONTROLS



STREAMLINE

SPECIFICATIONS

The Streamline surgical table series is intended to be used with mobile x-ray units for minimally invasive procedures on patients as large as 500 lbs.

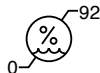
- Patient Capacity: 500lb(227kg)
- Tabletop and Mattress attenuation 1.6mm Al.(+/-2mm tolerance)
- Tabletop Material: Carbon fiber skin/foam core with integral facial cut-out
- Radiolucent Area: 56"L x 24"W unobstructed
- Tabletop: 84"L x 24"W x 1.62"T
- Table Dimensions: 86"L x 26"W
- 5" Castors have full swivel & wheel lock
- Mattress: 2" thick (5 cm)
- I-Shaped Steel Base 82"L x 26"W with Epoxy Finish
- Patient Straps: 2
- Hand Control: Activates all motions

Warranty

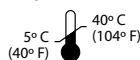
Surgical Tables Incorporated provides a 4-Year Limited Warranty/4- year warranty on non-electrical parts and 1-year warranty on electrical components. The warranty is only valid to the original purchaser and is not transferable. Surgical Tables Incorporated has the right to assess if mis-use has occurred. In the case of mis-use the warranty is void.

Required Power

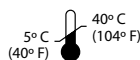
-120V/60HZ or 230V/50HZ



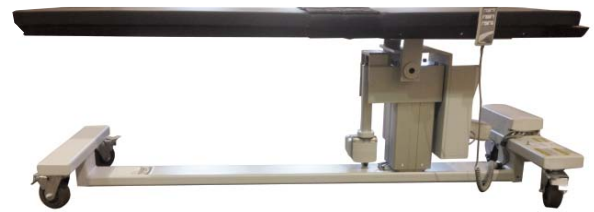
- Allowable Storage & Operating Humidity: 0-92%



- Allowable Storage Temperature: 0°C(32°F) to + 40°C(104°F)



- Allowable Operating Temperature: up to 40°C (104°F)



STREAMLINE FH

Streamline Series Fixed Height

1. FIXED HEIGHT 36"

TABLE WEIGHT: 330lbs(150kg)

	USA	EUROPE
AC Voltage	N/A	N/A
AC Current	N/A	N/A
Electric Shock Protection	N/A	N/A
Applied Part Rating	Type B	Type B
Mode of Operation	10% Duty Cycle 1 min on, 9 minutes off	10% Duty Cycle 1 min on, 9 minutes off

STREAMLINE 1

Streamline Series 1 Move Surgical Table

1. HEIGHT 28" TO 38"

TABLE WEIGHT: 375lbs(170kg)

Patient Capacity: 500lbs(227kg)

	USA	(*CE) EUROPE
AC Voltage	120V~	230V~
Frequency	60 Hz	50 Hz
AC Current	2.5A	1.3A
Electric Shock Protection	Class I	Class I
Applied Part Rating	Type B	Type B
Mode of Operation	10% Duty Cycle 1 min on, 9 minutes off	10% Duty Cycle 1 min on, 9 minutes off

STREAMLINE 2

Streamline Series 2 Move Surgical Table

1. HEIGHT 28" TO 38"

2. LATERAL TILT (+/-) 17°

TABLE WEIGHT: 390lbs(177kg)

Patient Capacity: 500lbs(227kg)

	USA	(*CE) EUROPE
AC Voltage	120V~	230V~
Frequency	60 Hz	50 Hz
AC Current	2.5A	1.3A
Electric Shock Protection	Class I	Class I
Applied Part Rating	Type B	Type B
Mode of Operation	10% Duty Cycle 1 min on, 9 minutes off	10% Duty Cycle 1 min on, 9 minutes off

STREAMLINE 3

Streamline Series 3 Move Surgical Table

1. HEIGHT 28" TO 38"

2. LATERAL TILT (+/-) 17°

3. TRENDLENBURG (+/-) 13°

TABLE WEIGHT: 420lbs(191kg)

Patient Capacity: 500lbs(227kg)

	USA	(*CE) EUROPE
AC Voltage	120V~	230V~
Frequency	60 Hz	50 Hz
AC Current	2.5A	1.3A
Electric Shock Protection	Class I	Class I
Applied Part Rating	Type B	Type B
Mode of Operation	10% Duty Cycle 1 min on, 9 minutes off	10% Duty Cycle 1 min on, 9 minutes off

STREAMLINE 4

Streamline Series 4 Move Surgical Table

1. HEIGHT 30" TO 40"

2. LATERAL TILT (+/-) 17°

3. TRENDLENBURG (+/-) 13°

4. LONGITUDINAL TRAVEL 10" (+/- 5")

TABLE WEIGHT: 590lbs (268kg)

Patient Capacity: 500lbs(227kg)

	USA	(*CE) EUROPE
AC Voltage	120V~	230V~
Frequency	60 Hz	50 Hz
AC Current	6.5A	3.4A
Electric Shock Protection	Class I	Class I
Applied Part Rating	Type B	Type B
Mode of Operation	10% Duty Cycle 1 min on, 9 minutes off	10% Duty Cycle 1 min on, 9 minutes off

STREAMLINE 5

Streamline Series 5 Move Surgical Table

1. HEIGHT 33.5" TO 43.5"

2. LATERAL TILT (+/-) 17°

3. TRENDLENBURG (+/-) 13°

4. LONGITUDINAL TRAVEL 10" (+/- 5")

5. LATERAL TRAVEL 10" (+/- 5")

TABLE WEIGHT: 695lbs(315kg)

Patient Capacity: 500lbs(227kg)

	USA	(*CE) EUROPE
AC Voltage	120V~	230V~
Frequency	60 Hz	50 Hz
AC Current	6.5A	3.4A
Electric Shock Protection	Class I	Class I
Applied Part Rating	Type B	Type B
Mode of Operation	10% Duty Cycle 1 min on, 9 minutes off	10% Duty Cycle 1 min on, 9 minutes off

*all angular measurements +/- 2°

*all linear measurements +/- .25"

*height measurement is to the top of the carbon fiber top

