

STREAMLINE

X-Ray imaging tables from Surgical Tables Inc.

DESIGN

This table line is designed for high patient throughput for surgery centers, pain management, and other multidisciplinary medical facilities.

VALUE

The Streamline series is the lowest priced table in the imaging table industry. This line along with the best selling Max series and EconoMax series tables, makes STI the company with the most table options to choose from in the medical table business.

MEDICAL SPECIALTIES SUPPORTED:

- Pain Management
- Minimally Invasive Spine Surgery
- GI Procedures
- Ultrasound Procedures
- Orthopedic
- Endovascular
- Gall Bladder
- X-Ray Procedures

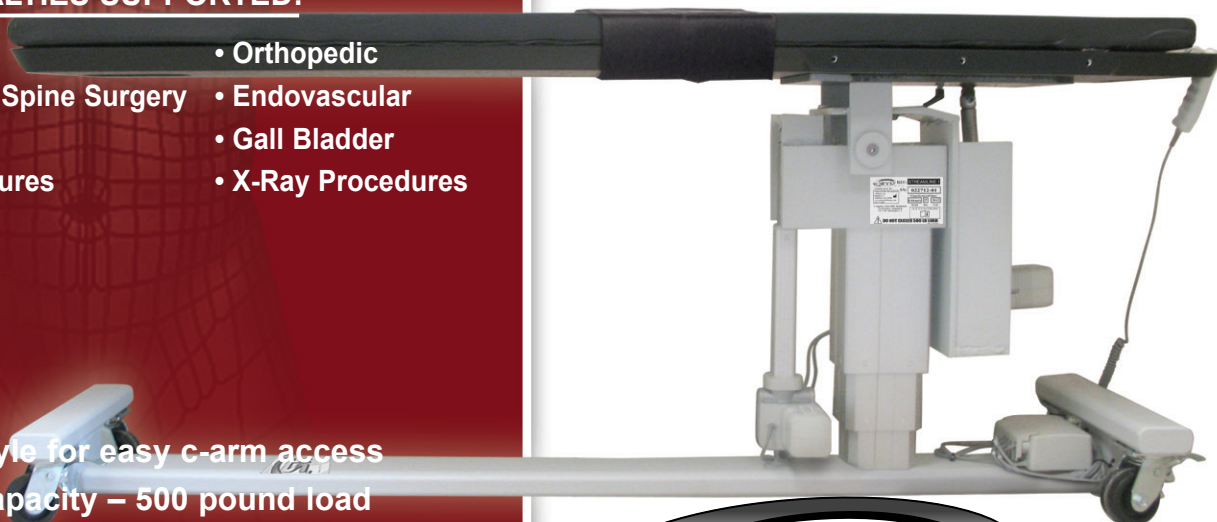
FEATURES

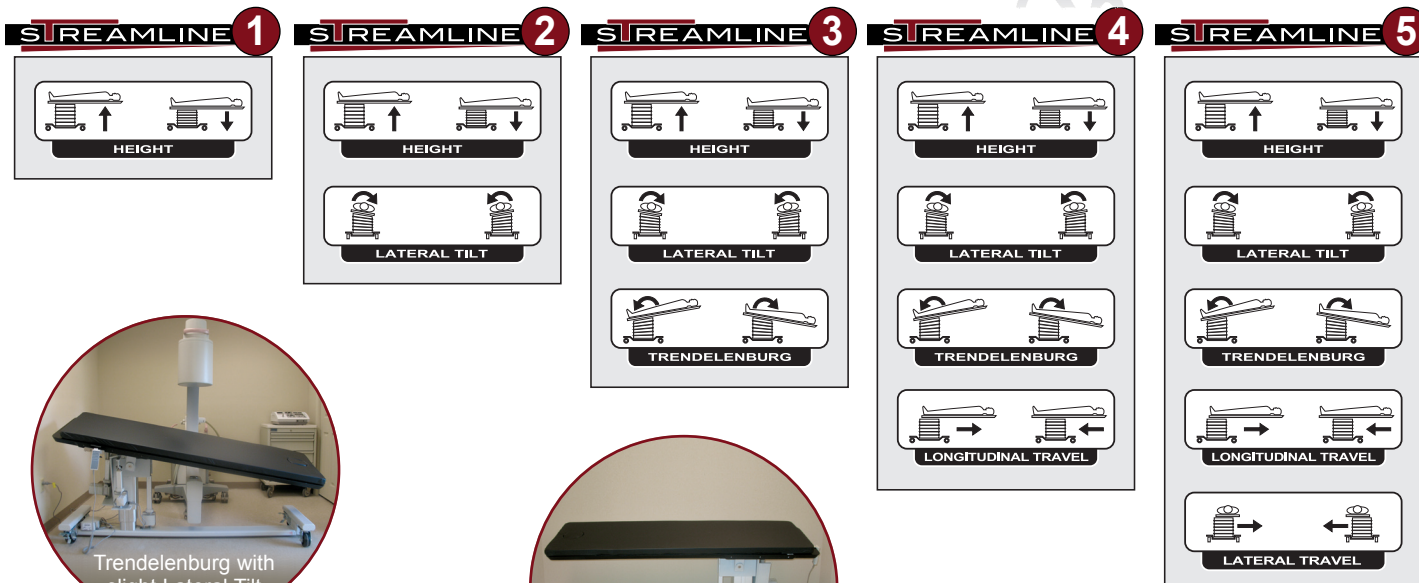
- Diving board style for easy c-arm access
- Large patient capacity – 500 pound load
- 2" patient high quality comfort pad
- Facial Cut-out for prone procedures
- Light weight - easy to physically move the table
- 24" top eliminates need for arm boards
- Simple to use top quality wheel locks
- Easy patient transfer to table



Carbon fiber diving board style imaging table

"absolutely the best price and value in the table industry"





Carbon fiber top of 24" width eliminates need for armboards and 84" length can accommodate even the tallest patients

Easy to use handswitch with power on indicator

High end actuator motor can lift over 500 pound load

Patient Straps

Facial Access Hole

2" thick high quality patient comfort pad

Diving board style easy c-arm access

Lightweight which makes it easy for staff to move the table around the room or room to room

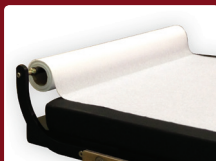


OPTIONS ▼

MODULAR SIDERAIL SYSTEM



PAPER TOWEL ROLL



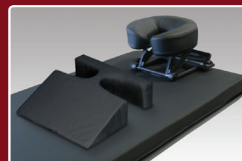
SURGICAL ARMBOARDS
(Removeable & rotates 180 degrees)



PROCEDURAL ARMBOARDS
(Each armboard rotates 180 degrees)



CERVICAL IMAGING PLATFORM



FOOT CONTROLS

